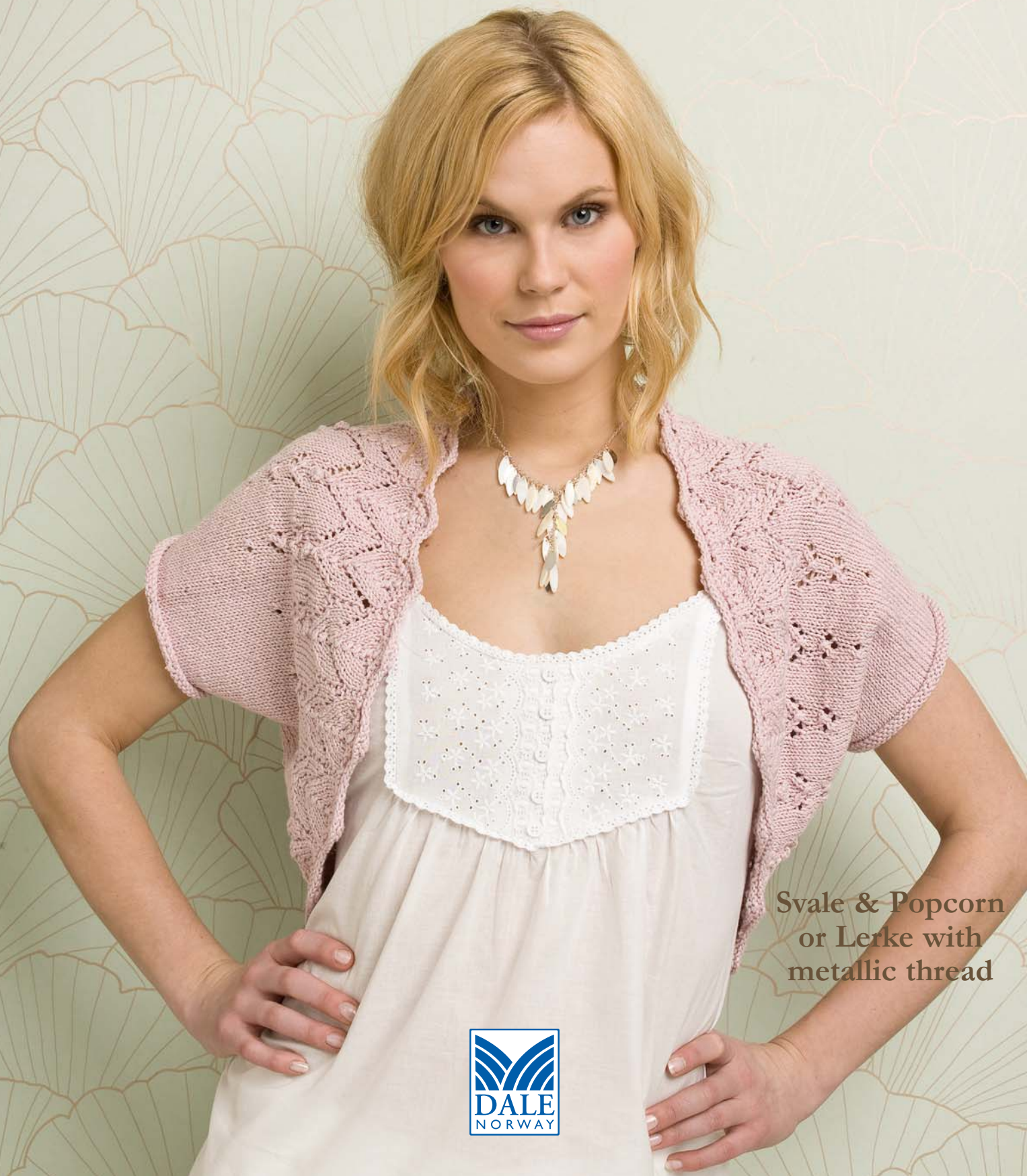


Nr 9002

Dale of Norway

Lacy Shrug



Svale & Popcorn
or Lerke with
metallic thread



9002 Lacy Shrug

- Designer: Ane Sæthre

MATERIALS: Svale & Popcorn or Lerke & metallic thread

SIZES: **S** **M** **L**

SVALE SHRUG:

Svale: 300 300 350 gr caramel 2846
 Popcorn: 50 50 50 gr mouse 0905

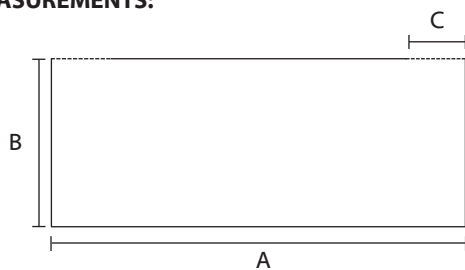
LERKE SHRUG: 250 250 300 gr pink pearl 3811

SUGGESTED NEEDLE SIZES: Cir needle in size 3.5mm, blunt tapestry needle and st markers. **Note:** US and metric needle sizes often do not match exactly and size equivalencies have changed. The original version of this pattern was written to use metric size needles; if in doubt as to whether a given US needle size is the same as a metric size, use the metric size needle. As always, please take the time to check your gauge carefully and change needle sizes as needed to obtain the correct gauge.

GAUGE: 22 sts over St st = 4" (10cm).

ACCESSORIES: Lerke Shrug, approx 875yds(800m) silver metallic thread.

FINISHED MEASUREMENTS:



A = Upper Width, flat: 26 3/4" (27 5/8", 28 3/8") / 68cm (70cm, 72cm)
B = Body Length to Seam: 10 1/4" (11", 11 3/4") / 26cm (28cm, 30cm)
C = Armhole Depth: 5 5/8" (6 1/8", 6 1/2") / 14.5cm (15.5cm, 16.5cm)

Watch gauge carefully to obtain the correct finished measurements!

SVALE SHRUG

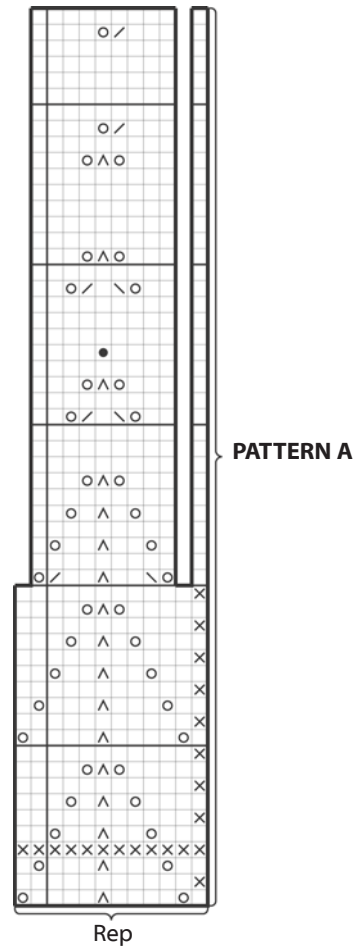
With 1 strand each of Svale and Popcorn held tog, C O 360/372/384 sts. Join and, working in the rnd, mark beg of rnd and p 1 rnd. Work first 5 rnds of Pattern A. Cut Popcorn and, working with Svale only, complete pattern and dec as shown on rnd 21 (300/310/320 sts). Place side markers at the beg of rnd and after 150/155/160 sts. Beg St st and work until body measures 10 1/4" (11", 11 3/4") / 26cm (28cm, 30cm) from bottom edge, ending last rnd 32/34/36 sts before end of rnd.

ARMHOLES: C OFF the next 64/68/72 sts for armhole, k next 86/87/88 sts, C OFF the next 64/68/72 sts for armhole, then k rem 86/87/88 sts.

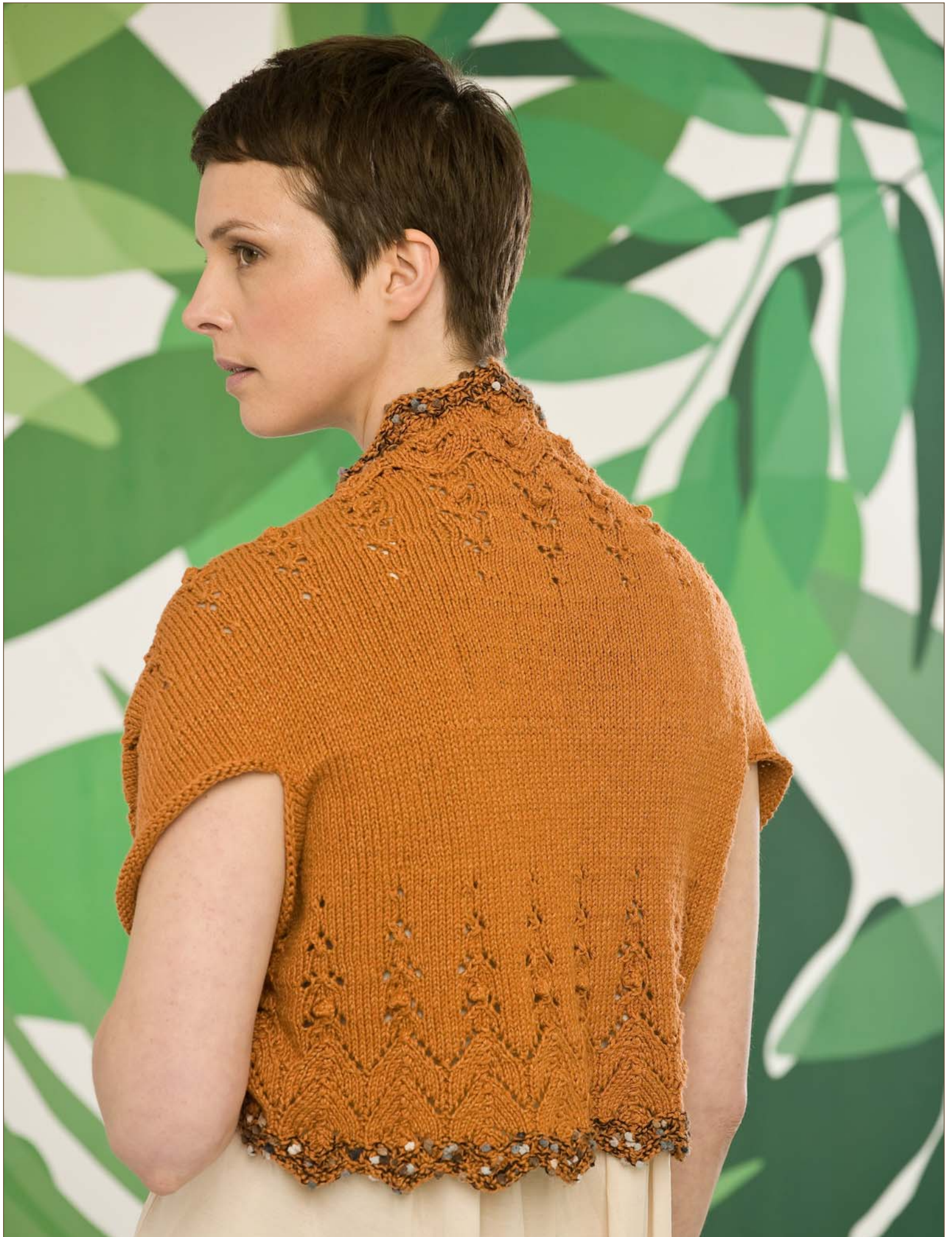
FINISHING: Lay shrug out to finished measurements and steam lightly. With live sts of front and back facing each other, graft sts tog using Kitchener St.

LERKE SHRUG

Holding 1 strand each of Lerke and metallic thread tog throughout, work same as Svale shrug.



- = k on RS, p on WS
- ⊗ = p on RS, k on WS
- = yo
- ⊞ = ssk
- △ = slip 1 st k-wise, k2tog, pss0
- ⊠ = k2tog
- = bobble = k into (front, back, front, then back) of next st (4 sts), turn; p 4 sts and turn; k2tog tbl, k2tog, pass first st over second (1 st)





0280-9002 Dale of Norway, Inc. © 2009 • Photography: Tommy Neass • Technical Editing & Layout: Ink & Wool

ABBREVIATIONS

approx = approximately	inc = increas(e)(ing)	RS = right side(s)
beg = begin(ning)	k = knit	sk2p = slip 1 stitch knitwise, knit 2 stitches together, pass slip stitch over
CC = contrast color	k-wise = knitwise, as if to knit	ssk = slip (1 stitch knitwise) twice, insert left needle through the front of both loops and knit both stitches together
ch = chain	k2tog = knit 2 stitches together	st(s) = stitch(es)
C O = cast on	m = meter(s)	St st = stockinette stitch
C OFF = cast off	MC = main color	tbl = through the back of the loop(s)
cir = circular	mm = millimeter(s)	tog = together
cm = centimeter(s)	p = purl	WS = wrong side(s)
cn = cable needle	p-wise = purlwise, as if to purl	yd(s) = yard(s)
cont = continu(e)(ing)	psso = pass slipped stitch(es) over	yo = yarn over needle to make 1 stitch
dec = decreas(e)(ing)	p2tog = purl 2 stitches together	
dp = double pointed	rem = remain(ing)(der)	
g st = garter stitch	rep = repeat(s)(ing)	
gr = gram(s)	rnd(s) = round(s)	

LERKE

52% Merino Wool/48% Cotton DK Weight Yarn. *Care Instructions:* Machine wash (delicate cycle) or hand wash in cold water using mild/neutral detergent. Dry flat; do not put in dryer. May be dry cleaned.

POPCORN

60% Acrylic/40% Polyamid. *Care Instructions:* Machine wash (delicte cycle) or hand wash in warm water using mild/neutral detergent. Dry Flat; do not put in dryer. May be dry cleaned.

SVALE

50% Cotton/40% Viscose/10% Silk DK Weight Yarn. *Care Instructions:* Machine wash (delicate cycle) or hand wash in cold water using mild/neutral detergent. Dry flat; do not put in dryer. May be dry cleaned.



Do not
bleach



Gentle
cycle spin



Steam lightly with
steam iron, if needed



Dry Clean with perchlorethylene
using normal methods

The patterns in this leaflet have been developed and tested by our design division. Every effort has been made to make the knitting directions in this leaflet as accurate as possible. However, we cannot be responsible for variations due to individual knitters, human error or typographical mistakes.

Copyright 2009, Dale of Norway, Inc. First edition. All rights reserved. No portion of this leaflet may be copied, leased, resold or otherwise distributed without the written permission of Dale of Norway, Inc. For further information write: Dale of Norway, 4750 Shelburne Road., Suite 20, Shelburne, VT 05482.