

Nr 9003

Dale of Norway

Pullover & Purse

Svale



9003 Pullover & Purse

- Designer: Ane Sæthre

MATERIALS: Svale

SIZES: XXS XS S M L XL XXL

PULLOVER:

500 550 600 650 700 750 800 gr
linen 2631

PURSE (one size): 100 gr
linen 2631

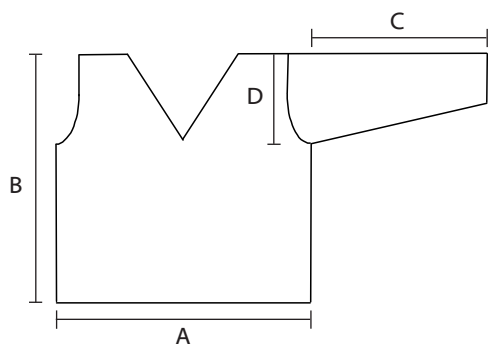
SUGGESTED NEEDLE SIZES: Cir and dp needles in sizes 3mm and 3.5mm, crochet hooks in sizes 2.5mm and 3mm, needle and thread, and st markers. **Note:** US and metric needle sizes often do not match exactly and size equivalencies have changed. The original version of this pattern was written to use metric size needles; if in doubt as to whether a given US needle size is the same as a metric size, use the metric size needle. As always, please take the time to check your gauge carefully and change needle sizes as needed to obtain the correct gauge.

GAUGE: 22 sts over Pattern A using larger needles = 4"(10cm).

ACCESSORIES: Pullover, approx 59"(1.5m) lace, 1 small button and seed beads; and Purse, approx 9"(23cm) lace, 1 button, seed beads, and 9⁷/₈"(25cm) of chiffon ribbon.

FINISHED MEASUREMENTS:

Pullover:



A = Chest Width: 29⁷/₈"(31⁷/₈" 34¹/₄" 36¹/₄" 38⁵/₈" 40¹/₂" 42⁷/₈")/
76cm(81cm,87cm,92cm,98cm,103cm,109cm)

B = Body Length: 20⁷/₈"(21⁵/₈" 22¹/₂" 23¹/₄" 24" 24³/₄" 25⁵/₈")/
53cm(55cm,57cm,59cm,61cm,63cm,65cm)

C = Sleeve Length: 15³/₄"(16¹/₈" 16¹/₂" 17" 17³/₈" 17³/₄" 18¹/₈")/
40cm(41cm,42cm,43cm,44cm,45cm,46cm)

D = Armhole Depth: 6³/₄"(7¹/₈" 7¹/₂" 7⁷/₈" 8¹/₄" 8⁵/₈" 9")/
17cm(18cm,19cm,20cm,21cm,22cm,23cm)

Watch gauge carefully to obtain the correct finished measurements!

PULLOVER

BODY: With larger cir needle, C O 180/192/204/216/228/240/252 sts. Join and, working in the rnd, mark beg of rnd and p 1 rnd, then k 1 rnd. Work 1 Eyelet rnd (* yo, k2tog; rep from * to end of rnd). K 1 rnd, p 1 rnd, then k 1 rnd. Place side markers at the beg of rnd and after 90/96/102/108/114/120/126 sts. Work 24 rnds of Pattern A, then beg Pattern B. AT THE SAME TIME, when body measures 3¹/₂"(4" 4³/₈" 4³/₄" 5¹/₈" 5¹/₂" 5⁷/₈")/9cm(10cm,11cm,12cm,13cm,14cm,15cm) from bottom edge, dec 1 st on each side of both markers, leaving 2 sts between dec sts (176/188/200/212/224/236/248 sts). Cont dec every 24 rnds twice more (168/180/192/204/216/228/240 sts). Work without further dec until body measures 14¹/₈"(14¹/₂" 15" 15³/₈" 15³/₄" 16¹/₈" 16¹/₂")/36cm(37cm,38cm,39cm,40cm,41cm,42cm) from bottom edge. C OFF first st for armhole, work next 83/89/95/101/107/113/119 sts, C OFF 1 st for armhole, then work to end of rnd. Cont working back and front separately.

BACK & NECK OPENING: Working back and forth, cont pattern and C OFF 3/3/3/3/4/4/4 sts at the beg of first 2 rows, 2 sts at the beg of next 4/4/4/6/6/6/8 rows, then dec 1 st at the beg and end of every other row 2/3/4/3/3/4/3 times (65/69/73/77/81/85/89 sts). Work without further shaping until armhole measures 5¹/₂"(5⁷/₈" 6¹/₄" 6³/₄" 7¹/₈" 7¹/₂" 7⁷/₈")/14cm(15cm,16cm,17cm,18cm,19cm,20cm). Next row, work first 19/20/21/22/23/24/25 sts, C OFF the next 27/29/31/33/35/37/39 sts for neck opening, then work to end of row. Working each side of back separately, cont pattern and C OFF every other row at neck edge, 2 sts twice, then 1 st once (14/15/16/17/18/19/20 sts). Work without shaping until armhole measures 6³/₄"(7¹/₈" 7¹/₂" 7⁷/₈" 8¹/₄" 8⁵/₈" 9")/17cm(18cm,19cm,20cm,21cm,22cm,23cm), then C OFF. Complete other side of back to match, placing neck shaping on opposite side.

FRONT & NECK OPENING: Working back and forth, cont pattern and shape armholes same as back. AT THE SAME TIME, when armhole measures 0"⁽³/₈" 3³/₈" 7¹/₈" 7¹/₈" 1¹/₈" 1¹/₈")/0cm(1cm,1cm,2cm,2cm,3cm, 3cm), C OFF center st to beg front neck shaping. Working each side of front separately, cont pattern and armhole shaping, and dec 1 st, 1 st in from neck edge, every RS row 18/19/20/21/22/23/24 times (14/15/16/17/18/19/20 sts); work dec for left neck edge as k2tog, and for right neck edge as ssk. Work without shaping until armhole measures 6³/₄"(7¹/₈" 7¹/₂" 7⁷/₈" 8¹/₄" 8⁵/₈" 9")/17cm(18cm,19cm,20cm,21cm, 22cm,23cm), then C OFF. Complete other side of front to match, placing armhole and neck shaping on opposite sides.

SLEEVES: With larger dp needles, C O 52/52/54/54/56/56/58 sts. Join and, working in the rnd, mark beg of rnd and p 1 rnd, then k 1 rnd. Work 1 Eyelet rnd as before. K 1 rnd, p 1 rnd, then k 1 rnd. P first st of every rnd and work 24 rnds of Pattern A, then beg Pattern B. AT THE SAME TIME, inc 1 st at the beg and end of every sixteenth/thirteenth/twelfth/tenth/ninth/eighth/eighth rnd 6/8/9/11/12/14/15 times, leaving p st at beg of rnd between inc sts and working inc sts into pattern (64/68/72/76/80/84/88 sts). Work without further inc until sleeve measures 15³/₄"(16¹/₈" 16¹/₂" 17" 17³/₈" 17³/₄" 18¹/₈")/40cm (41cm,42cm,43cm,44cm,45cm,46cm) from bottom edge.

SLEEVE CAP: C OFF 1 st to beg underarm, then work to end of rnd (63/67/71/75/79/83/87 sts). Working back and forth, cont pattern and C OFF 3/3/3/4/4/4/5 sts at the beg of first 2 rows, 3 sts at the beg of next 2 rows, then 2 sts at the beg of next 2 rows. Dec 1 st at the beg and end of every other row 13/14/15/15/16/17/17 times. C OFF 3 sts at

the beg of next 2 rows, then 2 sts at the beg of next 2 rows. C OFF rem 11/13/15/17/19/21/23 sts. Make second sleeve to match.

FINISHING: Lay body and sleeves out to finished measurements and steam lightly. Neatly sew front and back tog at shoulders.

NECK EDGING: With smaller cir needle and RS facing, beg at left shoulder and pick up 12 sts per 2"(5cm) along neck edge using a crochet hook $\frac{1}{2}$ -metric size smaller than needles to pick up an even number of sts k-wise. Join and, working in the rnd, mark beg of rnd and k 1 rnd. C OFF loosely k-wise but do not cut yarn. With larger crochet hook, use rem st as first st, * ch 3, skip next st, work 1 st slip in next st; rep from * to end of rnd, ending with a slip st in base of ch at beg of rnd. Fasten off.

BOTTOM EDGING: With larger crochet hook and RS facing, attach yarn to lower edge of body with a slip st. * Ch 3, skip 1 st along edge, work 1 slip st in next st; rep from * to end of rnd, ending with a slip st in base of ch at beg of rnd. Fasten off. Work crochet edging along lower edges of sleeves to match. Cut lace into 4 pieces; 1 piece approx 8 $\frac{1}{4}$ "(21cm) long for rosette, 2 for sleeves and rem piece for body. Run a line of basting sts along one edge of each piece and gather to fit inside lower edges of sleeves and body. Pin lace to p rnd above Eyelet rnd on WS of sleeves and body, adjusting gathers evenly along edges. Neatly sew lace to WS. Tightly gather basting on lace for rosette and securely knot ends of thread, forming lace into circle as shown in photo. Pin rosette to center front below neck opening, then neatly sew to front of body. Decorate center of rosette with button and beads. Pin sleeves into armholes, placing centers of sleeves at shoulder seams, then neatly sew sleeves to body.

PURSE

Size: 8 $\frac{1}{8}$ " x 8 $\frac{5}{8}$ "(21 x 22cm)

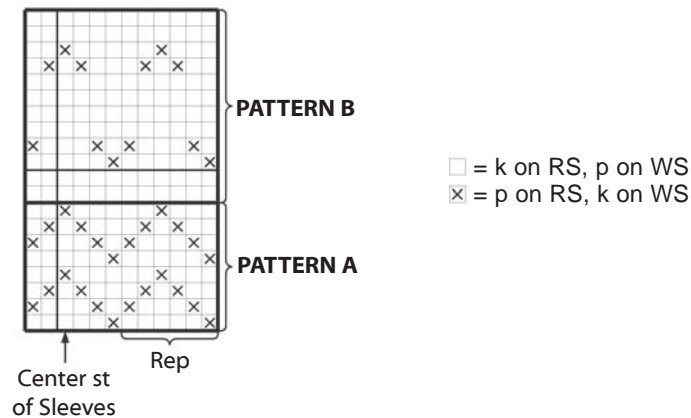
FLAP: With smaller cir needle, C O 45 sts. Working back and forth, beg with a WS row and k 2 rows. Work 1 Eyelet row (p 1 st, * yo, p2tog; rep from * to end of row). K 2 rows. Change to larger cir needle. Working first and last st of every row in g st, beg Pattern A over rem 43 sts and work until flap measures 4"(10cm) from bottom edge, ending with a RS row and C O 45 sts at end of last row (90 sts).

PURSE: With RS facing, join and, working in the rnd, mark beg of rnd. Beg Pattern B and cont 12-rnd rep until purse measures 8 $\frac{5}{8}$ "(22cm) from new C O sts. C OFF.

EDGING: With larger crochet hook and RS facing, attach yarn with a slip to C O edge of flap with a slip st at one end. * Ch 3, skip next st along edge, work 1 slip st in next st; rep from * to end of row. Fasten off.

SHOULDER STRAP: With smaller dp needles, C O 4 sts. Working back and forth, beg g st and work until strap measures approx 43 $\frac{3}{4}$ "(110cm), or desired length. C OFF.

FINISHING: Neatly sew purse tog along C OFF edge. Run a line of basting sts along one edge of lace and gather edge slightly. Pin lace to p row above Eyelet row on WS of flap and turn ends to WS. Neatly sew lace to flap. Fold ribbon in half and trim ends as shown in photo. Securely sew ribbon to front of purse and button on top of ribbon as shown. Decorate center of button with beads. Securely sew an end of shoulder strap to WS on each side of purse.





0280-9003 Dale of Norway, Inc. © 2009 • Photography: Tommy Næss • Technical Editing & Layout: Ink & Wool

ABBREVIATIONS

approx = approximately	inc = increas(e)(ing)	RS = right side(s)
beg = begin(ning)	k = knit	sk2p = slip 1 stitch knitwise, knit 2 stitches together, pass slip stitch over
CC = contrast color	k-wise = knitwise, as if to knit	ssk = slip (1 stitch knitwise) twice, insert left needle through the front of both loops and knit both stitches together
ch = chain	k2tog = knit 2 stitches together	st(s) = stitch(es)
CO = cast on	m = meter(s)	St st = stockinette stitch
C OFF = cast off	MC = main color	tbl = through the back of the loop(s)
cir = circular	mm = millimeter(s)	tog = together
cm = centimeter(s)	p = purl	WS = wrong side(s)
cn = cable needle	p-wise = purlwise, as if to purl	yd(s) = yard(s)
cont = continu(e)(ing)	pssso = pass slipped stitch(es) over	yo = yarn over needle to make 1 stitch
dec = decreas(e)(ing)	p2tog = purl 2 stitches together	
dp = double pointed	rem = remain(ing)(der)	
g st = garter stitch	rep = repeat(s)(ing)	
gr = gram(s)	rnd(s) = round(s)	

SVALE

50% Cotton/40% Viscose/10% Silk DK Weight Yarn. *Care Instructions:* Machine wash (delicate cycle) or hand wash in cold water using mild/neutral detergent. Dry flat; do not put in dryer. May be dry cleaned.



Do not
bleach



Gentle
cycle spin



Steam lightly with
steam iron, if needed



Dry Clean with perchlorethylene
using normal methods

The patterns in this leaflet have been developed and tested by our design division. Every effort has been made to make the knitting directions in this leaflet as accurate as possible. However, we cannot be responsible for variations due to individual knitters, human error or typographical mistakes.

Copyright 2009, Dale of Norway, Inc. First edition. All rights reserved. No portion of this leaflet may be copied, leased, resold or otherwise distributed without the written permission of Dale of Norway, Inc. For further information write: Dale of Norway, 4750 Shelburne Road., Suite 20, Shelburne, VT 05482.