

Nr 9008

Dale of Norway

Slip Stitch Cap & Mittens



Free Style

9008 SLIP STITCH CAP & MITTENS

- DESIGNER: Kari Haugen

MATERIALS: Free Style

SIZES: 8/10 12/14 years

CAP OR MITTENS:

Colors 1, 2, 3 & 4: 50 gr of each color for each size

COLORWAYS:

	I	II
Color 1:	hot lime 9817	neptune 6836
Color 2:	orange 3309	horizon 6015
Color 3:	petal pink 4613	hot lime 9817
Color 4:	fuchsia 4417	grape 5245

SUGGESTED NEEDLE SIZES: Dp needles in sizes 4.5mm and 5mm, and st markers. **Note:** US and metric needle sizes often do not match exactly and size equivalencies have changed. The original version of this pattern was written to use metric size needles; if in doubt as to whether a given US needle size is the same as a metric size, use the metric size needle. As always, please take the time to check your gauge carefully and change needle sizes as needed to obtain the correct gauge.

GAUGE: 18 sts and 24 rnds over St st using larger needles = 4"(10cm) x 4"(10cm).

Watch gauge carefully to obtain the correct finished measurements!

CAP

With smaller dp needles and Color 1, C O 72/80 sts. Join and, working in the rnd, mark beg of rnd and beg rnds at center back. Work 2"(5cm) of k2, p2 rib. Change to larger dp needles. Beg Pattern A and cont 12-rnd rep until cap measures approx 7 7/8"(8 5/8")/20cm(22cm) from bottom of rib, ending with a rnd 2, 6 or 10 of rep.

SHAPING: Working 1 rnd of each color in same order as graph, cont with next color of rep. Next rnd, * k 2 sts, k2tog; rep from * to end of rnd (54/60 sts). K 1 rnd without dec. Next rnd, * k 1 st, k2tog; rep from * to end of rnd (36/40 sts). K 1 rnd without dec. K2tog across next rnd (18/20 sts). K 1 rnd without dec. K2tog across next rnd (9/10 sts). K 1 rnd without dec. Gather rem sts on a piece of yarn and fasten securely. Make a pom-pom with Color 1 approx 1 5/8"(4cm) in diameter, then securely attach pom-pom to top of cap.

MITTENS

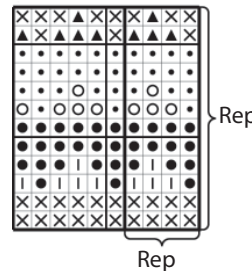
LEFT MITTEN: With smaller dp needles and Color 1, C O 32/36 sts. Join and, working in the rnd, mark beg of rnd. Work 4"(10cm) of k2, p2 rib. Change to larger dp needles. Beg Pattern A and work until hand measures 1 1/8"(1 5/8")/3cm(4cm) above rib.

THUMB OPENING: Next rnd, work 27/30 sts as set, k the last 5/6 sts with a piece of scarp yarn for thumb opening, slip these sts back to left needle and work to end of rnd. Cont working until hand measures approx 4 3/8"(5 1/8")/11cm(13cm), or 1 1/8"(3cm) short of desired length from top of rib, ending with a rnd 2, 6 or 10 of rep.

SHAPING: Working 1 rnd of each color in same order as graph, cont with next color of rep. Next rnd, * k 2 sts, k2tog; rep from * to end of rnd (24/27 sts). K 1 rnd without dec. Next rnd, * k 1 st, k2tog; rep from * to end of rnd (16/18 sts). K 1 rnd without dec. K2tog across next rnd (8/9 sts). K 1 rnd without dec. Next rnd, k 0/1 st, * k2tog; rep from * to end of rnd (4/5 sts). K 1 rnd without dec. Gather rem sts on a piece of yarn and fasten securely.

THUMB: Remove scrap yarn from thumb opening and slip resulting loops to larger dp needles, and pick up 1 st on each side of opening (12/14 sts). Join and, working in the rnd, mark beg of rnd. Beg St st with Color 1 and work until thumb measures approx 1 3/8"(1 5/8")/3.5cm (4cm), or 5/8"(1.5cm) short of desired length. Next rnd, * k 2 sts, k2tog; rep from * to end of rnd, ending rnd k 0/2 sts (9/11 sts). K 1 rnd without dec. Next rnd, * k 1 st, k2tog; rep from * to end of rnd, ending rnd k 0/2 sts (6/8 sts). K 1 rnd without dec. Next rnd, k 1/0 st, k2tog 2/4 times, end k 1/0 st. Gather rem 4 sts on a piece of yarn and fasten securely. Make right mitten to match, placing thumb opening at beg of rnd.

PATTERN A



- ⊗ = C2 = orange 3309/horizon 6015 = k
- ▮ = C2 = slip p-wise with yarn to WS
- = C3 = petal pink 4613/hot lime 9817 = k
- ◉ = C3 = slip p-wise with yarn to WS
- ▨ = C4 = fuchsia 4417/grape 5245 = k
- ▲ = C4 = slip p-wise with yarn to WS

ABBREVIATIONS

approx = approximately	inc = increas(e)(ing)	rnd(s) = round(s)
beg = begin(ning)	k = knit	RS = right side(s)
CC = contrast color	k-wise = knitwise, as if to knit	ssk = (slip 1 stitch knitwise) twice, insert left needle through the front of both loops and knit both stitches together
CO = cast on	k2tog = knit 2 stitches together	st(s) = stitch(es)
C OFF = cast off	m = meter(s)	St st = stockinette stitch
cir = circular	MC = main color	tbl = through the back of the loop(s)
cm = centimeter(s)	mm = millimeter(s)	tog = together
cont = continu(e)(ing)	p = purl	WS = wrong side(s)
dec = decreas(e/s)(ing)	p-wise = purlwise, as if to purl	yd(s) = yard(s)
dp = double pointed	pssO = pass slipped stitch(es) over	yo = yarn over
g st = garter stitch	rem = remain(ing)(der)	
gr = gram(s)	rep = repeat(s)(ing)	

FREE STYLE

100% Pure New Superwash Wool Worsted Weight Yarn. *Care Instructions:* Machine wash (delicate cycle) or hand wash in cold water using mild/neutral detergent. Dry flat; do not put in dryer. May be dry cleaned.

The pattern in this leaflet has been developed and tested by our design division. Every effort has been made to make the knitting directions in this leaflet as accurate as possible. However, we cannot be responsible for variations due to individual knitters, human error or typographical mistakes.

Copyright 2009, Dale of Norway, Inc. First edition. All rights reserved. No portion of this leaflet may be copied, leased, resold or otherwise distributed without the written permission of Dale of Norway. For further information write: Dale of Norway, 4750 Shelburne Road, Shelburne, VT 05482.